

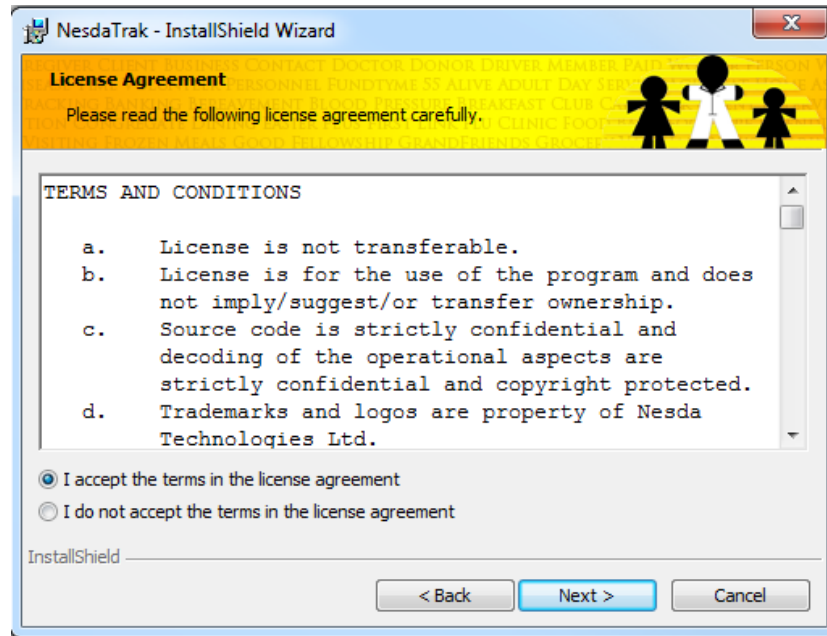
## NesdaTrak Server Installation Instructions

The NesdaTrak Server software application is used to host data and the executable files utilized by NesdaTrak. It provides a centralized and integrated system that ensures that clients using NesdaTrak are using the same version of NesdaTrak and are accessing and utilizing the same data. The following instructions can be used to install the server on either a Windows Server or a designated host computer on a Windows based network. Please note that, like most software installations, the installer must have either Administrative or Power User permissions to successfully install and configure the NesdaTrak Server.

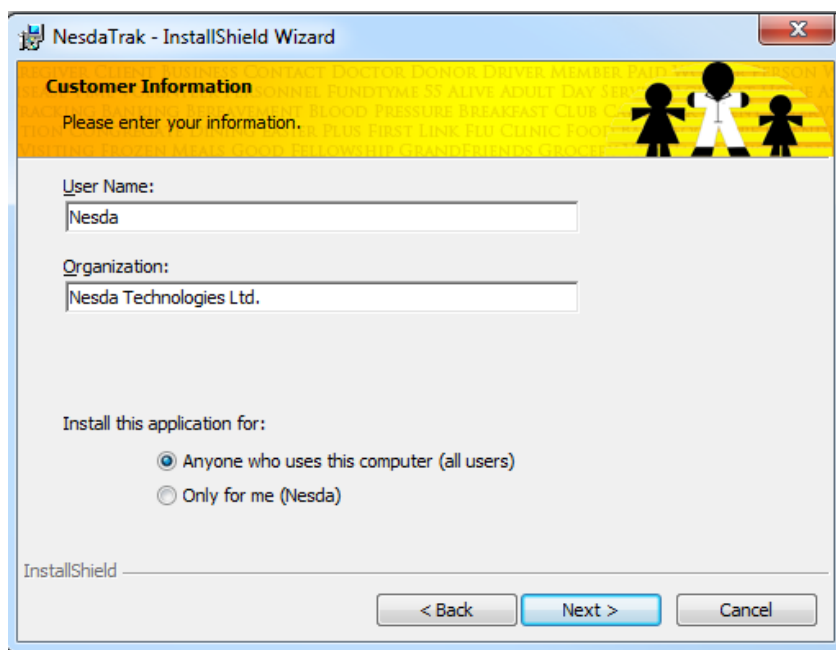
1. The NesdaTrak Server installation system is based off of a self-extracting executable file. This can either be obtained and loaded from a received DVD or flash drive or can be directly downloaded off of the internet from <http://www.nesdatrak.ca/downloads>.
2. To begin the installation, simply double click on the setup installation file, if you are prompted with a security warning, then select Run/Allow/Yes to confirm your intention to run the installer.
3. The first screen is simply offering you a warm welcome into the installation process, select the **Next** button. Please note at any point during pre-installation, it is possible to go back and change configuration settings or to abandon installation, the **Back** button and **Cancel** buttons fulfill these functions.



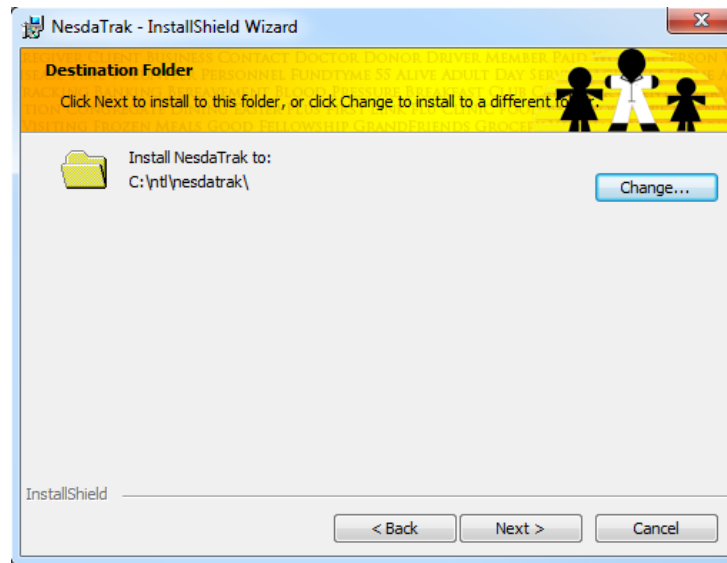
4. The next screen contains the EULA information, which are the Terms and Conditions one must accept before installing the software. Please review and accept the Terms and Conditions and then select the **Next** button. Please note that the acceptance of the Terms and Conditions is mandatory for the installation of the NesdaTrak Server.



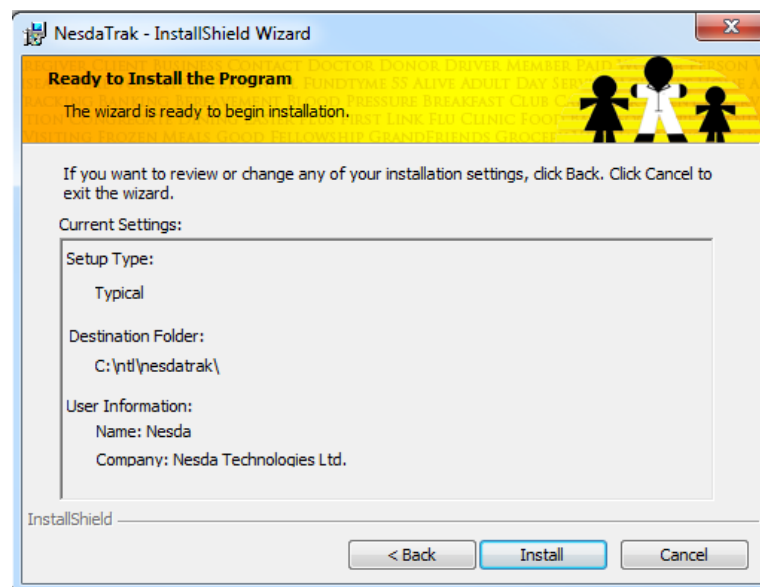
5. The next screen contains customer information form, you may fill this out if you'd like with your name and organization. Leave the radio buttons near the bottom of the form at their default setting unless you have a very good reason not to as they are related to security and permissions that will affect the entire NesdaTrak system.



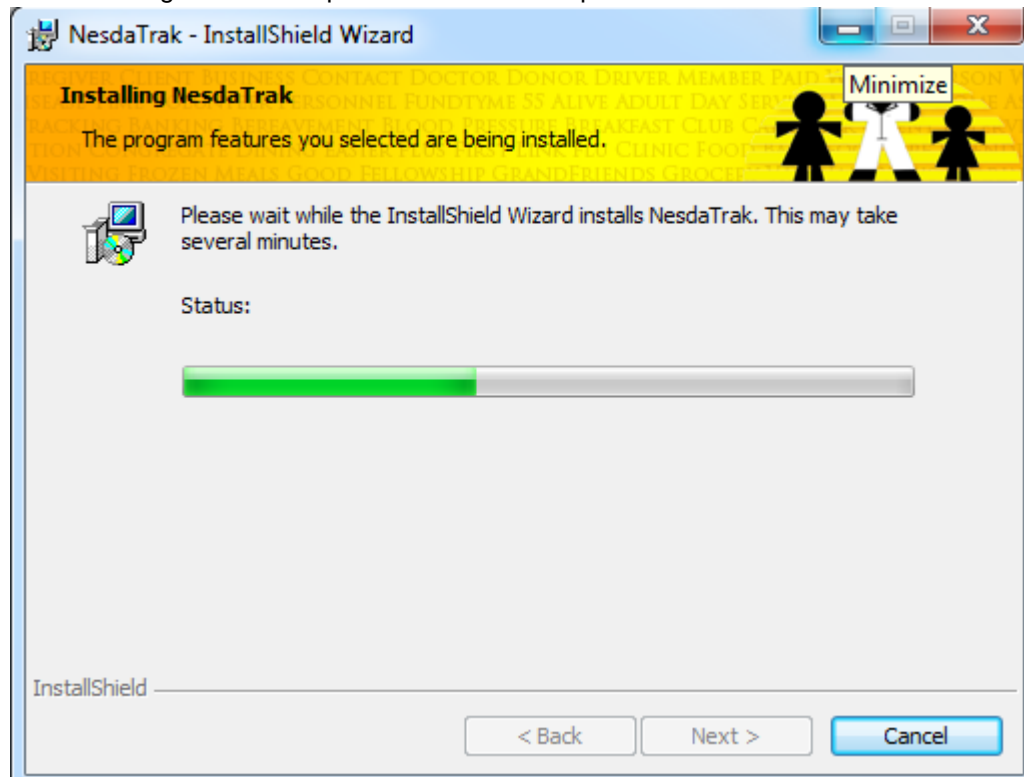
- The next screen is the destination selection screen that allows you to customize the system directory where the NesdaTrak Server will be saved to. By default, the system wishes to save to the generic program files area, but due to NesdaTrak requiring potentially multiple computers accessing its data from across the network, and our desire to see a minimal number of network related issues affecting the performance of NesdaTrak, we recommend that it be saved to the root of the **C: drive**. If you have a second hard drive or partition that is used for shared directories on a network, this is also an acceptable place to save the NesdaTrak Server. Regardless of where NesdaTrak Server is saved, select **Next** when you are satisfied.



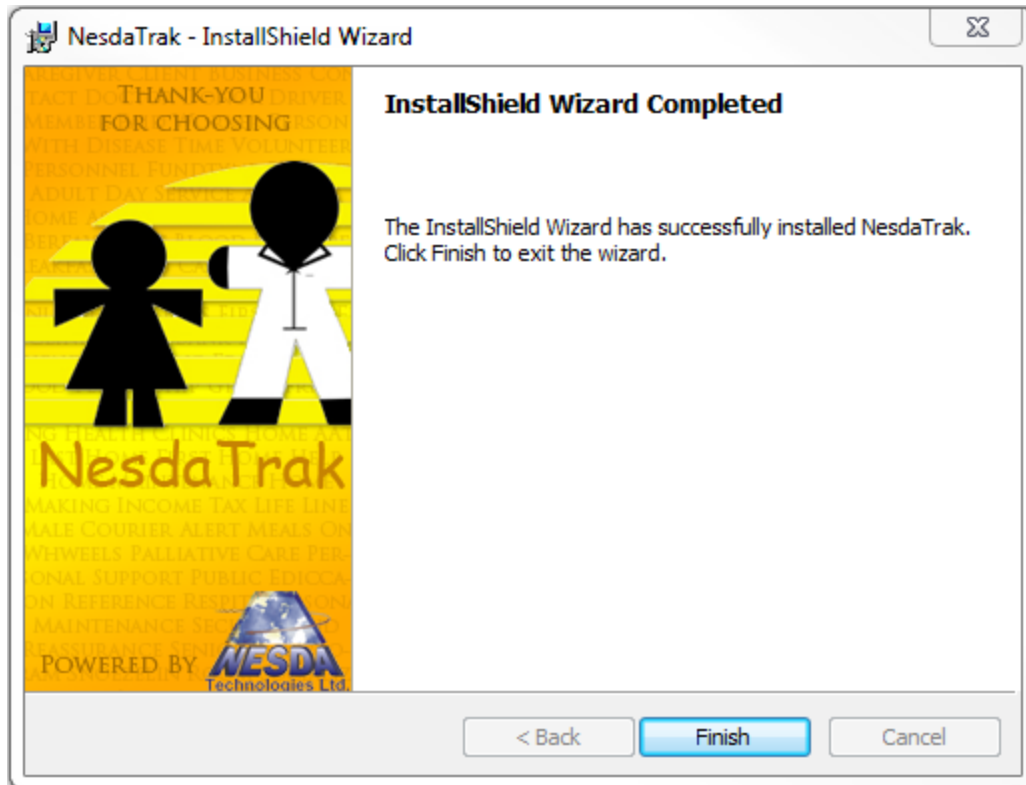
- The final screen in the installation configuration form is a review of what has been selected, review and confirm your choices and select Install to begin the installation of NesdaTrak Server.



8. After you select **Install** (see previous step), NesdaTrak Server will be installed on the computer. The installation might take a couple of minutes to complete.



- a. If you do not possess the required credentials to install software on the computer, error messages will appear at this point and the installation will be cancelled and a rollback will take place.
9. The final screen on the NesdaTrak Server installer is simply a confirmation screen ensuring you that NesdaTrak Server was successfully installed onto the system.
    - a. If you are installing NesdaTrak Server onto one computer for demo or review related purposes, then there are no further steps to take for the NesdaTrak Server and you may move on to installing the NesdaTrak Client interface. If any computer is expected to access the NesdaTrak Server from over the network, then proceed to the next step.



10. To ensure that others are able to access the NesdaTrak data and executable, the directory must be shared. Depending on the network setup, you can allow Everyone to access the shared file or allow access on an individual basis. Regardless of user selection, the users who will be accessing NesdaTrak require both **Read** and **Modify** permissions to the NesdaTrak folder.
11. Once you are satisfied with your NesdaTrak Server setup, you can move on to the NesdaTrak Client installation.
12. It is highly recommended that as soon as the first NesdaTrak Client is installed, ideally on the primary administrative machine, that the following tasks take place:
  - a. NesdaTrak should be upgraded to its latest version; this will ensure that the site has the newest features and bug fixes. Depending upon the version of the NesdaTrak Server, errors might occur during the upgrade process, please call NesdaTrak support in this eventuality.
  - b. An official NesdaTrak Registration key must be added to the system, whether it is for a subscribed site or for testing and analysis, NesdaTrak support must be contacted to unlock NesdaTrak for use.
13. For questions or issues regarding NesdaTrak installation, please contact NesdaTrak Support.